

*16 Longbeach Road,
Battersea
SW115ST*



£800,000 Share of Freehold

A delightful three double bedroom garden flat of over 1250 sq.ft retaining plenty of original character and charm, located on one of the area's most desirable roads minutes from both Clapham Common and Lavender Hill. This superb flat comes with a share of the freehold and no onward chain.

Key Features:

- Superb three double bedroom garden flat
- Hugely desirable road close to Clapham Common
 - Over 1250 Sq.ft
 - Share of Freehold
- Two attractive patio areas
 - No Chain
- Plenty of original character
 - Own Front Door

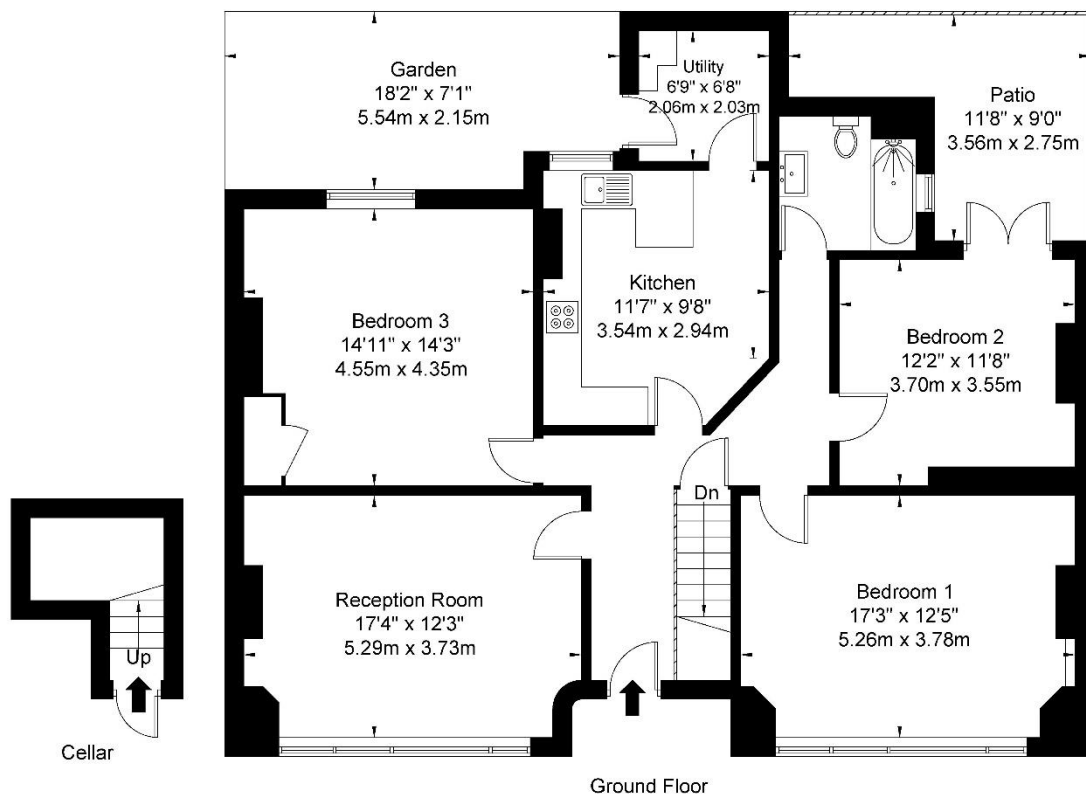






Longbeach Road Battersea, SW11 5ST

Approx. Gross Internal Area = 117.5 sq m / 1265 sq ft



Ground Floor

Ref

Copyright

**BLEU
PLAN**

The Floor plan is not to scale and measurements and areas shown are approximate and therefore should be used for illustrative purposes only. The plan has been prepared in accordance with the RICS code of Measuring Practice and whilst we have confidence in the information produced it must not be relied on. If there is any aspect of particular importance, you should carry out or commission your own inspection of the property.

Copyright @ BLEUPLAN